



# St Joseph's School, Chelsea

Celebrating 100 years of Catholic Education in Chelsea 1924-2024

**Term 1, Week 6 Thursday 7th March**



Dear Families,

Reconciliation:

Jon G, Harper A, Maisie A, Bella T, Oisin H, Abigail J, Brigid R, Lucy C, Bella T, Kai R, Mila R, Sophia M, Michelle K, Edison D, Spencer H, Harper R, Sebastian B, Mackenzie T, Ted S, Aiden C, Olivia J, Catherine V, Levi N, Ethan B, Henry C, Ava C, Lachlan M, William C, Jude I, Lennox S, Edward M, Brodie H, Thomas M, Patrik B, Sofia P, Heidi C, Hunter W, Abigail J, Jonah G, Isabella B, Lana S, Louis A, Kendra J, Ted S, Elsie B, Ariana LT, Maeve L, Matthew, Amelia B, Olivia A, Jaiden F, Harper R, Isabella B & Charlotte M

### **Friday 8th March**

Tomorrow is a school closure day. All staff will be engaged in professional development around writing.

**St Joseph's 100 year Celebration** - See below for this week's piece of history.

Last week a few parents met to start to organise a few of the celebrations coming up for our 100 Year Anniversary:

When: Sunday 29th July 2024

Where: St Joseph's Primary School

Time: 11am Mass followed at 12 noon by activities and whole school open 12-4pm.

Next meeting: Thursday 15th March

### **Easter Raffle**

Coming home with your child tonight is our annual Easter raffle tickets. Each booklet holds 10 tickets which are \$5.00 for 10 or 50 cents per ticket. Don't forget to put your name on the butt of the ticket. Please return your tickets with the correct money to the school office by Monday 18th March. The raffle will be drawn on Wednesday 27th March.

### **Scholastic Book Club**

**All orders must be made online using your credit card.** Full instructions are shown on the last page of the catalogue. All Book Club sales earn award points which enables the school to purchase books for our library. The cut-off date for ordering will be March 12th to ensure delivery by the end of term.

Thank you.

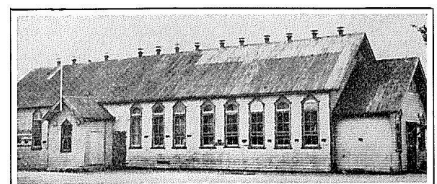
Kindest regards,

Gavan.

## **St Joseph's School 100 Years**

St Joseph's was attached to Mentone until 1927 when Frankston was made a parish and Fr. J. Toomey who had succeeded Fr. T. O'Sullivan in Mentone, was appointed Parish Priest of Frankston.

In 1924 because of the increase in the numbers of parishioners it became necessary to enlarge the church.



With this increase in the community it was decided that a school was necessary as the children were travelling to Mentone for school - so the church was divided into two classrooms with folding doors. The first school classes were held on 29th July, 1924.

Father engaged a Miss Matthieson, Miss Jones and Miss Brady as teachers. Some time later Miss Matthieson joined the Brigidine Community. During this time it was necessary for the desks to be taken out and the seats placed for Mass, and on Sunday the effort had to be reversed for school. Let us remember these wonderful people who did this essential work. May they rest in peace.

As the school increased in numbers it became necessary to engage more teachers, so Fr. Toomey invited the Brigidine Sisters to conduct the school. Our current green team was named after the Brigidine Sisters. The first group to teach were Sr. Elizabeth, Sr. Dominic, and Sr. Daria followed by Sr. Felix, Sr. Dominica, Mother Claire and Sr. Clement (Miss Matthieson). These dedicated nuns travelled from Mentone and back each day by train - and they did this to the end of the school year 1935. By this time the larger church had been divided into four classrooms.

**ARE YOU INTERESTED IN FINDING OUT MORE ABOUT  
YOUR CHILD'S SCHOOL?**

**ARE YOU INTERESTED IN HAVING INPUT INTO THE  
FUTURE DIRECTION OF**

**ST JOSEPH'S PRIMARY SCHOOL CHELSEA?**

**COME ALONG TO THE SCHOOL ADVISORY COUNCIL  
ANNUAL GENERAL MEETING ON**

**Tuesday 26th March at 6.15pm 2024 Sharp IN THE  
LIBRARY**



An outline of the functions of SACs can be obtained below

SACS Terms of Reference.

Meetings are 6 times a year (an hour or so) and you just need to be interested in the welfare of the School to join.

School Advisory Councils are advisory bodies which form an important

expression of the educational partnership that exists between parents,

schools, parishes and the wider community to support all students.

This partnership is reflected in the ex-officio membership of both the

principal and the parish priest on the council. What the council does is

directed by the MACS board through the Terms of Reference for School

Advisory Councils.

The School Advisory Council provides a forum for discussion and

discernment, where parent voice and community perspective are available to influence and support the decisions made by the principal and parish priest for the good of school and parish where students' wellbeing and outcomes are paramount.

The Board of Melbourne Archdiocese Catholic Schools Ltd (MACS) has

responsibility for the strategic direction and oversight of the operation

and management of MACS schools, including St Joseph's PS Chelsea. Clear lines of authority, reporting and delegation from the MACS Board through the MACS

Executive Director delegate the day to day operational management of St Joseph's PS Chelsea to its principal.

In keeping with the objects of the MACS Constitution, which states "The

good work Of educating the young, undertaken in the light of the Gospel,

is a co-responsible task led by every member of the Catholic school community", the School Advisory Council provides a crucial point of connection between the wider school community and school leaders.

While the School Advisory Council does not have governance responsibility or decision-making authority, it supports the principal and school leadership and provides an important connection to the parish. It is not a governing body but its role is to support the overall governance of the system as it "is to give consideration to, and advice on, important school matters in order to support the principal and the strategic interest of the school." (Working Together in Mission p.11)

**Current members of the Council include:**

Fr Kevin Williams, June Pereria, Kevin Pound, Gavan O'Donnell, Lisa Kniese, Chris Espinoza, Greig Barrow, Franklin Foot

If you wish to nominate for the Council please complete this form:

Expression of Interest to be a Member of the School Advisory Council 2024 - St Joseph's Chelsea

All nominations will need to be made within 24 hours of the Annual General Meeting on the above form.

PLEASE NOTE: ALL APPLICANTS WILL NEED TO BE INTERVIEWED BY MEMBER/S OF THE SCHOOL ADVISORY COUNCIL. NOMINATIONS MUST BE RECEIVED BEFORE THE AGM Tuesday 26th March 2024

SCHOOL ADVISORY COUNCIL (Previously Parish Education Board) ACTIVITIES OVER THE LAST COUPLE OF YEARS.

- Building and Refurbishments
- Finances – Funding
- Supporting the establishment of PEAT (Parent Engagement Action Team) – Conversation Hour
- Setting of Fees and Levies
- Curriculum Development
- School policies
- School Structures
- Enrolments
- Student Well Being
- St Joseph’s Twilight Fete
- St Joseph’s Market Day
- Annual Report to the Community
- Community Events
- After School Care onsite
- Faith Development of the Children

# 2025 Enrolments

## St Joseph's School

*Enrolments at St Joseph's Parish School for children entering Foundation in 2025 are now open.*



**OPEN DAYS**  
**Thursday 7th March &**  
**Thursday 18th April**

School open for viewing 9am-3pm  
Open Day Principal Address at  
9.30am and 12.30pm



**Call 8773 1111 Anytime to book a tour**

School Tours run for 45 minutes by our Year 6s

**Tours are run at**  
**9.30 and 12.30pm**

362 Station Street, Chelsea

☎ 8773 1111

✉ [info@sjchelsea.catholic.edu.au](mailto:info@sjchelsea.catholic.edu.au)

🌐 <http://sjchelsea.catholic.edu.au>



**CELEBRATING 100 YEARS of**  
**CATHOLIC EDUCATION IN CHELSEA**  
**1924-2024**

Always Faithful

**SAFETY**

**RESPONSIBILITY**

**RESPECT**





## Colour Run!

Dear Parents and Carers,

We are so excited for our Colour Explosion School Run 4 Fun on the 15th March from 2.00pm to 3.30pm.

To help provide a safe and smooth event, we need volunteers for numerous roles.

Help will be needed prior to the event to set up the obstacle course and then at the event itself to spray the kids with colour and obviously I would love some volunteers to pack up the event too. I am asking for volunteers that can assist from 12pm through till 4.30pm. Even if you can only assist for an hour or so it would be amazing.

If you can help in any capacity, please contact Elizabeth Ireson via [bettyireson@gmail.com](mailto:bettyireson@gmail.com) or 0424185707 letting me know if you can make it.

\*\*\*\*Please also make sure you have a WHITE T-SHIRT ready for the day. \*\*\*\*

We have only approximately 50% of students registered for the Colour Run we would love to see you all get behind it and raise money for the playground but also participate in the fun prizes up for grabs.

You only need to raise \$10 to achieve your first incentive prize!

So jump online and create a profile page at [www.australianfundraising.com.au](http://www.australianfundraising.com.au) and start fundraising today!

## The Miranda Foundation is hosting its major event – the Biggest Playdate.

The Miranda Foundation is a long-standing supporter of the Children's Cancer Centre at Monash Children's Hospital.

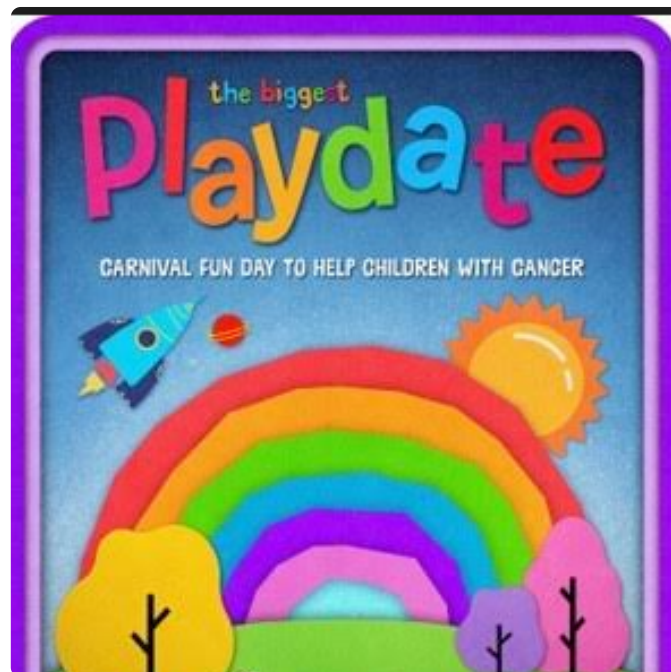
Held at Aspendale Gardens Community Centre the event is a fun day for young people and the young at heart. Project Manager Taylah Miranda explains:

“The Biggest Playdate is a day full of carnival rides, food vendors, a visit by some of your favourite movie characters, games and prizes, and a silent auction,” Taylah said.

“100% of the day's donations directly benefit children at Monash Children's Cancer Centre,” she said.

“Join us for a big day out where cancer is forgotten for a brief second, smiles, happiness and family are celebrated, and the community comes together united.”

Taylah is a former student of St Joseph's School.



## Expectation - Responsibility: I organise myself and my belongings

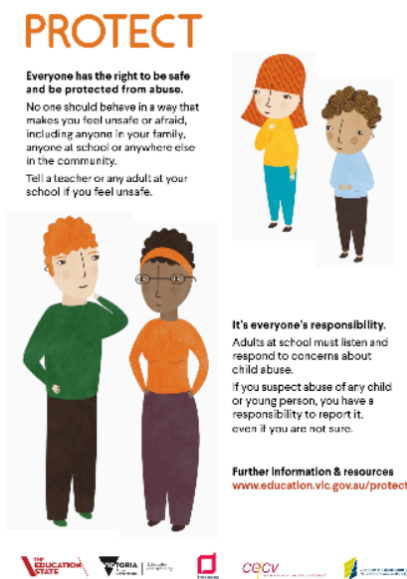
We continue to learn and bring together the whole-school to develop a positive, safe and supportive learning culture. Remember we have three core values:

**Safety, Respect and Responsibility**



Over the next fortnight, our focus is still on our core value **“Responsibility”**. We are learning how to organise ourselves and be responsible for our belongings" in the classroom and also outside in the playground by:

- packing and unpacking our own school bags
- placing our school bags in the lockers provided
- knowing where to put belongings in the classroom eg: drink bottles, diaries, notes
- equipment is tidy and organised, not left outside in the playground or in foyer areas
- checking ourselves in on our zones
- knowing the routines of our classroom
- listening to my teacher’s instructions by using whole body listening



## Child Safety Update - PROTECT

St Joseph’s, Chelsea is committed to providing a safe environment for all students and young people and will take active steps to protect them against abuse.

St Joseph’s promotes the inherent dignity of children and young people and their fundamental right to be respected and nurtured in a safe school environment. This is particularly so for the most vulnerable children, including Aboriginal and Torres Strait Islander children, children from culturally and/or linguistically diverse backgrounds, and children with disabilities.

When allegations of abuse concerning children and young people are raised, St Joseph’s will take prompt action to have these appropriately referred and investigated. The fundamental issues of understanding effective practices in child safety and identifying and responding to child harm are paramount for our school.

We will strive for continual improvement that is responsive to emerging thinking, evidence and practice, so as to eliminate the possibility of abuse occurring in the first place.

Creating a child-safe school environment is a dynamic process that involves active participation and responsibility by the school, our families and our community. It is marked by collaboration, vigilance and proactive approaches across policies, procedures, curriculum, and practices.

Every person involved at St Joseph's has a responsibility to understand the important and specific role they play individually and collectively to ensure that the wellbeing and safety of all children and young people are at the forefront of all we do and every decision we make.

In accordance with requirements of the Victorian Government's Ministerial Order No 1359, St Joseph's, Chelsea maintains a culture of 'no tolerance' to child abuse.

You will find our policies and procedures related to the eleven standards on our website. We welcome and encourage continued discussion and collaboration from our families to support the young people in our care.

# LUNCH TIME CLUBS

Do not forget our lunchtime clubs that run throughout the week.

Lunchtime Clubs At St Joseph's		
Day	Activity Prep -Year 6	Where
Monday	Drawing	Discovery Centre
	Choir	Performing Arts Room
Tuesday	LEGO, mindful colouring, card games, reading, drawing	Wellbeing Hub
	Garden/chickens	Sustainable Garden
Wednesday	Reading, Drawing Club, Script writing group	Library
	Garden/chickens	Sustainable Garden
Thursday	LEGO, mindful colouring, card games, reading, drawing	Wellbeing Hub

## 2024 School Fees

The 2024 fee statements were sent out via email on February 1st. On your statement was the total owing for the whole year. Payments may be made weekly, fortnightly, monthly or over 3 terms. We accept cash, credit card (office or over phone), Bpay and direct deposit.

Fee statements are emailed each month to your nominated email address. If you have not received your statement please contact the office. If you have no other payment arrangements in place and have not made a payment this year your account is now overdue. We ask that a minimum of 3 payments are made throughout the year with all fee accounts to be finalised by the end of Term 3. If you wish to set up a payment arrangement please download the direct debit (cheque or savings account) or credit authority form (see the links below) and submit to the office.

### Camps, Sports and Excursions Funding

CSEF is provided by the Victorian Government to assist eligible families to cover the costs of school trips, camps and sporting activities.

If you hold a valid means-tested concession card or are a temporary foster parent, you may be eligible for CSEF. A special consideration category also exists for asylum seeker and refugee families. The allowance is paid to the school to use towards expenses relating to

camps, excursions or sporting activities for the benefit of your child.

The annual CSEF amount per student is:

- \$150 for primary school students
- \$250 for secondary school students

If you meet the above criteria please contact the school office for the application form.

Applications close June 2024.

### **St Joseph's Concessional Fee Policy**

Please read the new Concessional fact sheet information for those families who qualify and meet the criteria. It offers significant savings to families.

Concessional School Fees are available to any family that meets the below eligibility criteria:

- of Aboriginal or Torres Strait Islander heritage
- holding an HCC (Dept of Health Concession Card) and eligible for CSEF (The card must be issued in the name of the fee payer and list the students for whom the concession is to be applied).
- experiencing severe financial hardship
- holding a DVA Gold Card (Dept of Veterans Affairs Health Card)
- identified as refugees and holding an ImmiCard is strongly encouraged to apply for concessional school fees.

To see St Joseph's School Fees Concession policy please click on the link below.

Students of eligible families are entitled to concessional school fees.

The school fees for eligible students are:

- 1 child: \$15 per child per week, direct debit (\$780 per annum or \$195 per term)
- 2 children: \$23 for the family per week, direct debit (\$1196 per annum, or \$299 per term)
- 3+ children: \$30 for the family per week. direct debit (\$1560 per annum, or \$390 per term)

If your family meets the criteria please click on the application form below and return the completed form to the school office.

# Before and After School Program

<https://www.kingston.vic.gov.au/services/families-and-children/before-and-after-school-care>

St Joseph's OSHC 2023

Name of Program: St Joseph's Catholic Primary School OSHC

If you wish your child to attend please book a place on 9581 4867. The sessions start from 6.45am and conclude at 6.00pm. Entry will be from Woodbine Grove gate each morning and afternoon.

The only children allowed onsite before 8.30am will be those booked into Before School Care.

*To enrol please click on the link above.*

Contact Our School hours Care for further information:

W: [kingston.vic.gov.au/beforeandafterschoolprogram](http://kingston.vic.gov.au/beforeandafterschoolprogram)

E: [beforeandafterschoolprogram@kingston.vic.gov.au](mailto:beforeandafterschoolprogram@kingston.vic.gov.au)

Ph: 9581 4867



## Canteen 2024

Please click on the download button for the Canteen lunch order price list for this year. The canteen will commence next Thursday 8th February.

[Download](#)



## School Uniform Price Update

Please see a new pricelist, effective 01 November 2023.

[Download](#)



## 2024 Fee Schedule

Please click on the link for the 2024 Fee Schedule

[Download](#)



## St Joseph's Concessional Fee Policy

[Download](#)



## Credit card authority form

Credit card authority form is for the payment of school fees. Please fill in and return to the school office if you wish for us to make the payment arrangement on your behalf

[Download](#)



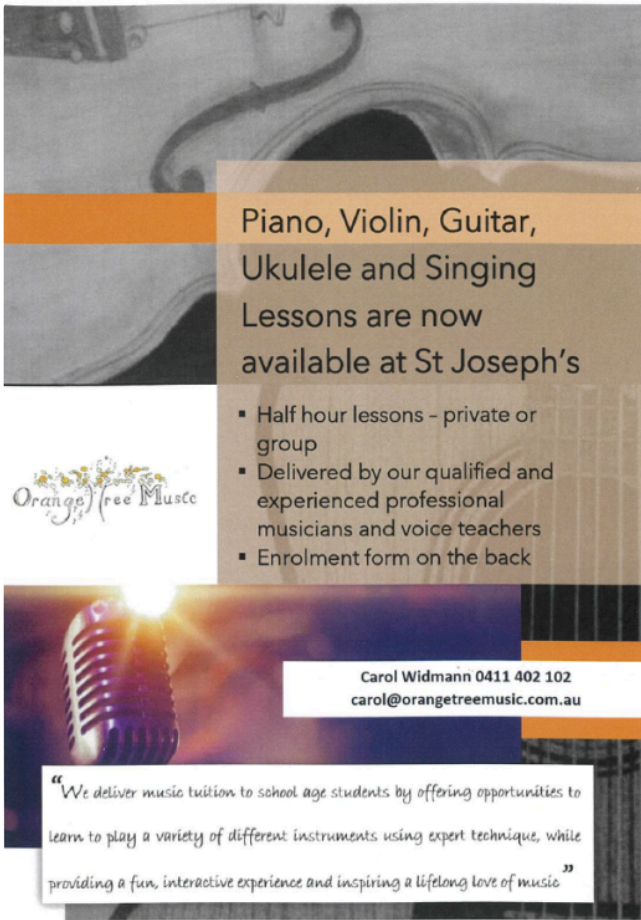
## Direct debit form

Direct debit form is for the electronic transfer of funds from your cheque or savings account for the payment of school fees

[Download](#)



# Orange Tree Music



Piano, Violin, Guitar,  
Ukulele and Singing  
Lessons are now  
available at St Joseph's

- Half hour lessons – private or group
- Delivered by our qualified and experienced professional musicians and voice teachers
- Enrolment form on the back

Orange Tree Music

Carol Widmann 0411 402 102  
carol@orangetreemusic.com.au

*“We deliver music tuition to school age students by offering opportunities to learn to play a variety of different instruments using expert technique, while providing a fun, interactive experience and inspiring a lifelong love of music”*



## Student Enrolment

- Piano     Private Lessons \$38 per lesson    or     Group Lessons \$15 per lesson  
 Violin     Private Lessons \$38 per lesson  
 Guitar     Private Lessons \$38 per lesson    or     Group Lessons \$15 per lesson  
 Ukulele     Private Lessons \$38 per lesson    or     Group Lessons \$15 per lesson  
 Voice     Private Lessons \$38 per lesson    or     Group Lessons \$15 per lesson  
 I would like to hire an instrument that is the right size for my child.

Name of school    St Joseph's Primary School

Student    Surname \_\_\_\_\_ First Name \_\_\_\_\_

Student's grade    \_\_\_\_\_

Parent/guardian    Surname \_\_\_\_\_ First name \_\_\_\_\_

Address    \_\_\_\_\_

Telephone    \_\_\_\_\_

Email address    \_\_\_\_\_

**Conditions:** Tuition fees for each term are invoiced at the start of term and payment is due upon receipt of invoice. Fees cannot be refunded if Orange Tree Music School has not been notified of absence from school by 8am on tuition day. If sufficient notice of school absence is given, a make-up class will be arranged. From the time your child is enrolled they are considered to be continuing in the music program until written cancellation from parent/guardian is received.

This is confirmation that I wish to enrol my child into Orange Tree Music School for music lessons. I accept the above conditions and understand that lessons will be conducted during school hours.

Signed \_\_\_\_\_ Date \_\_\_\_\_

☎ Carol 0411 402 102

[carol@orangetreemusic.com.au](mailto:carol@orangetreemusic.com.au)

[@orangetreemusic](https://www.instagram.com/orangetreemusic)

[orange tree music](https://www.facebook.com/orangetreemusic)

Fill in a form from the office if your child is interested.

# SPOTLIGHT

## Book Club

ISSUE 2

### Reading books about heroes can be a great way to learn about the world and ourselves

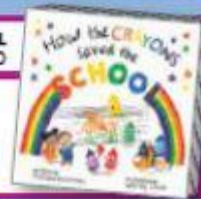
- ★ Heroes show us a way to overcome life challenges through the use of a variety of character strengths and virtues.
- ★ Books about heroes can teach important life lessons and the importance of working with others to achieve great things.
- ★ Their stories also show us that we can accomplish great things when we help others and open ourselves to being helped by others.

Do you think there might be some heroic characters in these new books?

#### AGES 3+

HOW THE CRAYONS SAVED THE SCHOOL  
ITEM 010

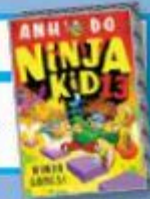
**Oh no, the school has lost all its colour!** In a quiet town, a wave of grey has swept over a little school. Happy kids are now bored, bored, bored. Charming halls and playgrounds are now dull, dull, dull. Something has to be done! On another long, grey afternoon, the students get a surprise that can help save the day: a box of seven special crayons!



#### AGES 7+

NINJA GAMES  
ITEM 004

**It's time to go BANANAS!** Thanks to Grandma's AWESOME new invention, Nelson and Kenny are inside their favourite video game. But can they defeat the big, bad SUPER BOSS before they run out of time ... AND LIVES?!



#### AGES 8+

LOL COLLECTION #2  
ITEM 016

**Aliens, mutants, ninjas and a battle-hardened Santa Claus will have kids laughing until their cheeks hurt!** This collection of stories includes Noodle: The Not-So-Undercover Alien, Night of the Mutant Glowworms, Battle Robots, My Best Friend is an Alien, The Epsilon Academy, Vampire for Hire, Monster Food Fight, Battle of the North Pole, Gym Class Werewolf and Attack of the Recess Ninjas.



#### AGES 10+

HEROES  
ITEM 066

**Frank and Stanley are best friends until Japan bombs Pearl Harbor.** The boys fight to make their way home amidst the carnage of war, it's clear that everything has changed. Stanley's mother is Japanese-American and he is suddenly facing a terrible prejudice that he's never known before - he's seen as the "enemy," and Frank, who's white, cannot begin to understand what Stanley will now face. Can their friendship - and their dreams - survive this watershed moment in history?



SCHOLASTIC

REMIND STUDENTS WHEN TO  
HAVE THEIR ORDERS PLACED BY:

12<sup>th</sup> March 2024

# Community News



## 2024 Term Dates

Red indicates a change from last week

### 2024

#### Week 6

Thur 7th Mar Open Day, Learning Conferences F-Yr 6 3.30-6.00pm, Easter egg raffle tickets go home, donations of Easter eggs please

Fri 8th Mar **School Closure Day - Staff Writing PD**

#### Week 7

Mon 11th Mar School Closure-Labour Day public holiday

Wed 13th Mar Yr 3 and 5 Naplan 9-11am

Thurs 14th Mar Yr 3 and 5 Naplan 9-11am, 100 year Planning meeting 6.30-7.30pm

Fri 15th Mar Yr 3 and 5 Naplan 9-11am, Yr 5/6 sport vs Seaford North. F-6 Mass 1pm for Feast of St Joseph, 2.20pm colour run

Sun 17th Mar Biggest Play Date 10.00am-4.00pm

Week 8

Mon 18th-20th Mar Year 5/6 Mt Evelyn Camp, Easter egg tickets due back

Thurs 21st Mar Yr F-6 Sticks and Stones performance, Harmony Day, visit from Bishop Tony Ireland

Fri 22nd Mar Summer Lightning Prem

Sun 24th Mar Palm Sunday

Mon 25th Mar Wrapping of Easter eggs (all welcome!)

Tuesday 26th Mar Photo day (all students to wear school uniform. Details to follow), 6.15pm  
AGM School Advisory Council

Wed 27th Mar Easter Egg Raffle draw

Thur 28th Mar Holy Thursday, F-6 Athletics Sports Carnival, **End of term 1 - 2pm finish**

### **2024 TERM DATES**

**Term 1 - Tues 30th January - Thur 28th March**

**Term 2 - Mon 15th April - Fri 28th June**

**Term 3 - Mon 15th July - Fri 20th September**

**Term 4 - Mon 7th October - Tues 17th December**